

# li Homed:In

18 Station Road, Southwater, RH13 9HQ

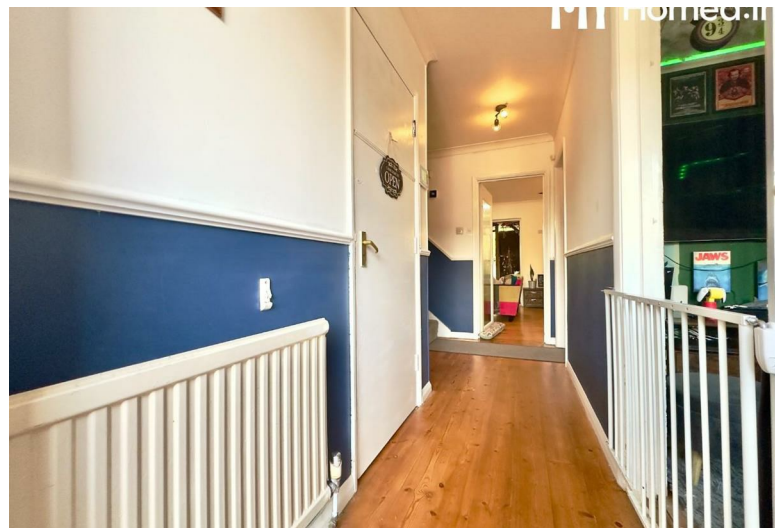


Howard Road  
Horsham, RH13 6AB  
£450,000





# Howard Road



## Description

A versatile and well positioned 3 bedroom home offering convenience and flexible accommodation in a popular town.

- Brilliantly Versatile Horsham Home at 1,230 sq ft
- Open Plan Living Room-Diner
- Garage Conversion Potential with Plumbing/Cabinetry
- Good Sized Driveway
- Large Downstairs WC
- 3 Good Sized Double Bedrooms
- Downstairs Family Room/Snug w/ WC, Ideal 4th Bedroom
- Not-Overlooked, Private and Manageable Garden
- Well Positioned in Road and for Town Access

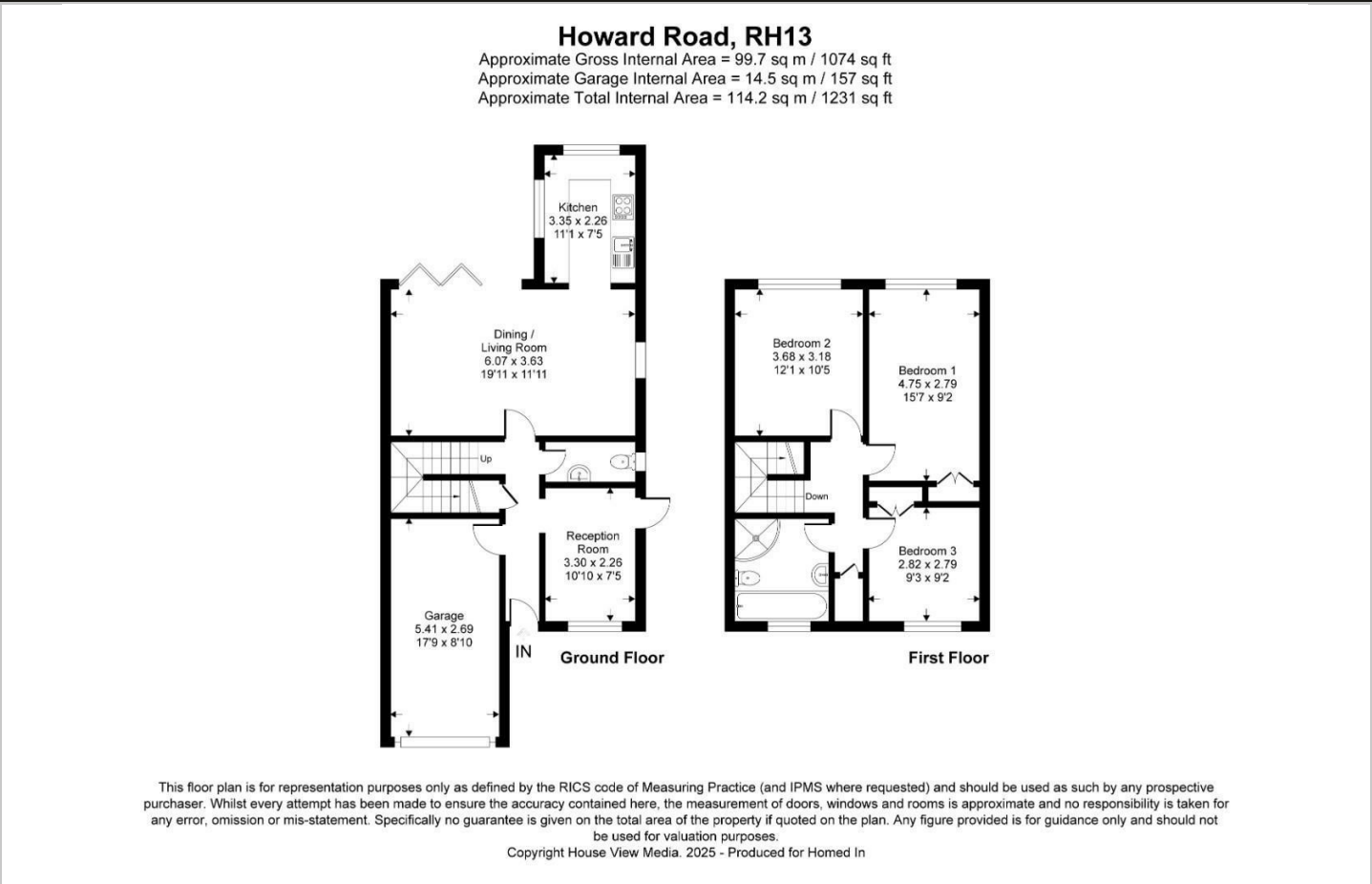




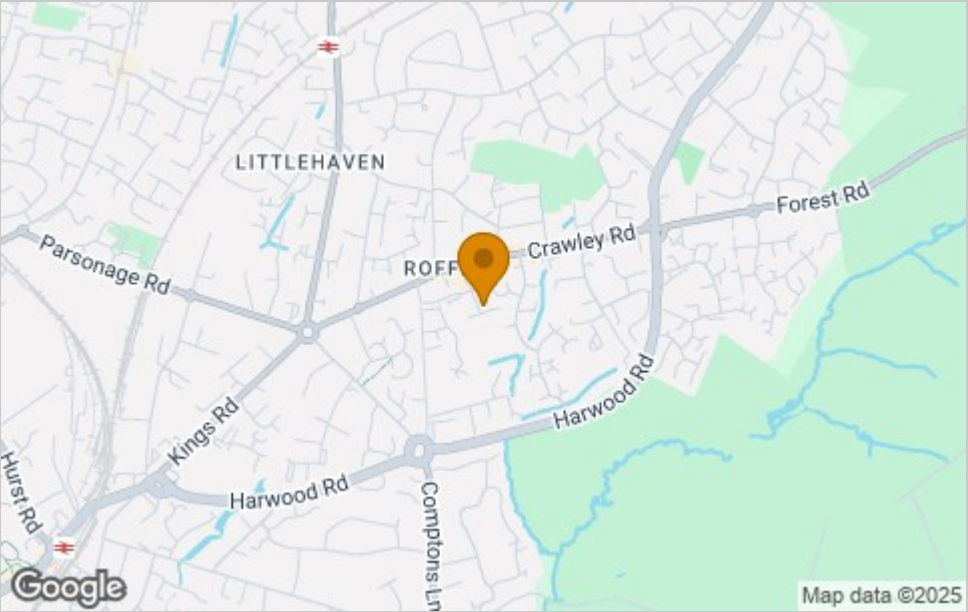




Floor Plan



Area Map

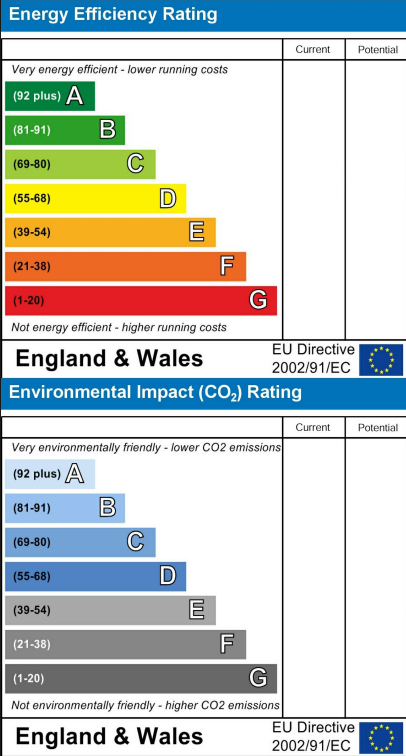


Viewing

Please contact our Horsham Office on 01403 597595 if you wish to arrange a viewing appointment for this property or require further information.

These particulars, whilst believed to be accurate are set out as a general outline only for guidance and do not constitute any part of an offer or contract. Intending purchasers should not rely on them as statements of representation of fact, but must satisfy themselves by inspection or otherwise as to their accuracy. No person in this firms employment has the authority to make or give any representation or warranty in respect of the property.

Energy Efficiency Graph



To GET A FREE VALUATION Call us on: 01403 597595  
or email us at: info@homedin.co.uk